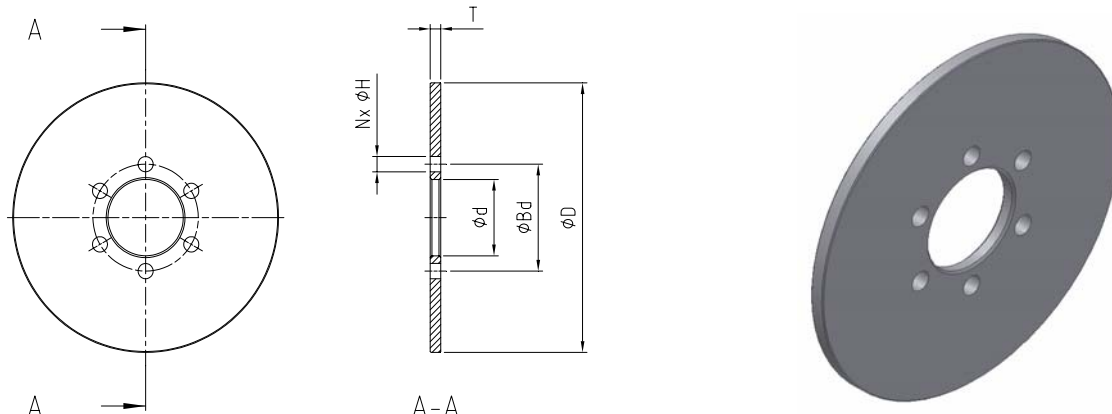


# BRAKE DISCS & HUBS

## Brake discs



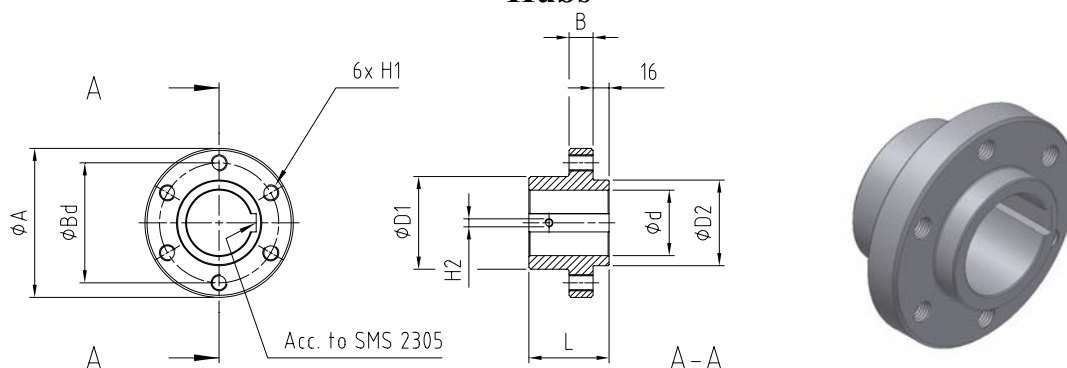
Brake disc model	Bd [mm]	D [mm]	d [mm]	H [mm]	N [no. of holes]	T [mm]	Max. torque [kNm]
BSS 30	119	300	85	17	6	12	24,3
BSS 35	119	350	85	17	6	12	24,3
BSS 40	119	400	85	17	6	12	24,3
BSS 45	158	450	115	21	6	12	41,2
BSS 50	158	500	115	21	6	12	41,2
BSS 60	158	600	115	21	6	12	41,2
BSS 70	TBD at order	700	TBD at order	TBD at order	TBD at order	25	TBD at order
BSS 80	TBD at order	800	TBD at order	TBD at order	TBD at order	25	TBD at order
BSS 90	TBD at order	900	TBD at order	TBD at order	TBD at order	25	TBD at order
BSS 100	TBD at order	1000	TBD at order	TBD at order	TBD at order	25	TBD at order
BSS 110	TBD at order	1100	TBD at order	TBD at order	TBD at order	36	TBD at order
BSS 120	TBD at order	1200	TBD at order	TBD at order	TBD at order	36	TBD at order
BSS 130	TBD at order	1300	TBD at order	TBD at order	TBD at order	36	TBD at order

Bore dimensions for brake discs larger than ø600 mm has to be defined at order.

The brake discs are as standard made of steel S 355 J2G3.

Other materials, sizes and/or customised designs can be manufactured on request.

## Hubs



Hub model	Compatible brake disc models [mm]	A [mm]	B [mm]	Bd [mm]	D1 [mm]	D2 [mm]	d (max) [mm]	H1	H2	L [mm]	Max. torque [kNm]
217591	BSS 30 BSS 35 BSS 40	148	24	119	92	85	65	M16	M8	80	2,1
217592	BSS 45 BSS 50 BSS 60	201	30	158	120	115	85	M20	M8	90	4,7

The hubs are as standard made of steel S 355 J2G3.

Other materials, sizes and/or customised designs can be manufactured on request.